

1. About the IP PBX

The mini PBX works with IMI45 embedded Mini-itx ATOM motherboard and designed for Small & Medium Businesses. System developers can run most of the production version PBX software including asterisk in this kit. It can also simplify the installation procedure and thus, no more complicated migration work needed. The default software is Elastix2.x.

2. Configure the device via GUI

2.1 Access the GUI

The PBX has 2 RJ45 ports, the IP address of LAN port is 192.168.0.200, the WAN port is "DHCP client", it can get an ip address from Router/Switch.

You may setup the ip pbx by IE ,plug the Ethernet cable into the LAN port,run IE and input the default IP address of the LAN port <http://192.168.0.200> ,it will redirect to the setting page of the ip pbx, the default password for the web access is:

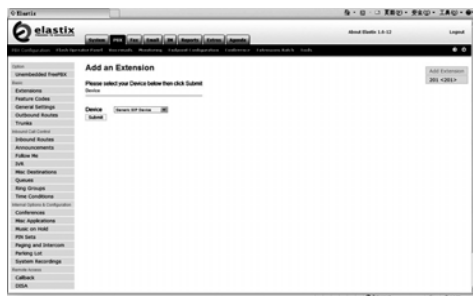
Username: admin ,

Password: 123456



2.2 If you can't access the PBX , please check if you have connect the RJ45 cable to the WAN port and your computer is in the same network 192.168.0.xxx as PBX.

2.3 You will see the settings of the ip pbx as below.



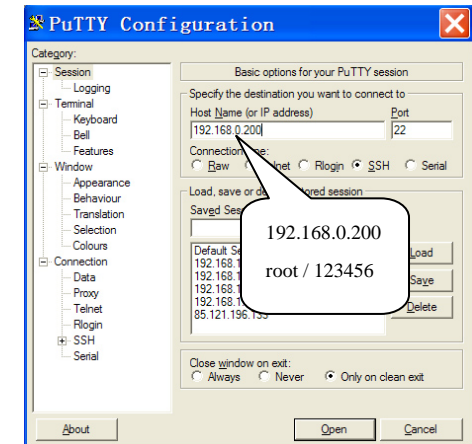
3. Configure the device via SSH

You may configure the device via SSH (PuTTY).

Run PuTTY, input the IP address 192.168.0.200 and click "Open".

Username : root

Password : 123456



4. Features of Elastix

- Call recording
- Conference center with virtual rooms
- Voicemail
- SIP and IAX support, among others
- Voicemail-to-Email functionality
- Flexible and configurable IVR
- Caller ID
- Integrated echo canceller by software
- Multiple trunk support
- End Point Configurator
- Incoming and outgoing routes with support for dial pattern matching
- Call parking
- Support for PIN sets
- Billing and consumption report
- Channel usage reports
- Support for call queues
- Fax server based on HylaFax
- Fax to email customization
- Fax visor with downloaded PDFs
- Access control for fax clients

5. Reference Links

- <http://www.elastix.org/>
- <http://www.asterisk.org/>
- <http://www.chinaroby.com/>
- <http://www.asteriskguru.com/>